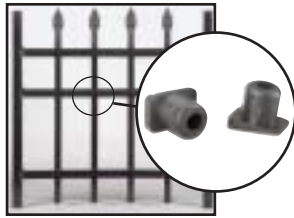


2131



2132



Hidden Picket Fasteners
(patent pending)

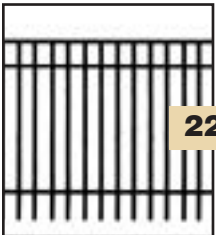


Hidden Rail Lock
(patent pending)

No unsightly screws



2220



2230



2233

Metric measurements can be found on our website:
www.DiggerSpecialties.com

2131 3 RAIL W/ SPEAR POINTS

Heights: 48", 54", 60", 72"
 Posts: 2½" x 2½" x .090" Wall w/ 71" centers
 Heights: 84", 96"
 Posts: 2½" x 2½" x .125" Wall w/ 71" centers
 Gate Posts: 2½" x .090" Wall Gate
 Post w/ Inserts = .215 Wall
 or 4" x 4" x .125" Wall
 Post Caps: 2½" or 4" Flat Cap - Standard
 (Ball Cap - Optional)
 Rails: 1½" Height x .100" Wall x 1½" Width .070" Wall
 Pickets: 1" x 1" x .065" Wall
 Picket Spacing: 4" between pickets
 Finial Options: Triad, Quad

2132 3 RAIL W/ ALT. SPEAR POINTS

Heights: 48", 54", 60", 72"
 Posts: 2½" x 2½" x .090" Wall w/ 71" centers
 Heights: 84", 96"
 Posts: 2½" x 2½" x .125" Wall w/ 71" centers
 Gate Posts: 2½" x .090" Wall Gate
 Post w/ Inserts = .215 Wall
 or 4" x 4" x .125" Wall
 Post Caps: 2½" or 4" Flat Cap - Standard
 (Ball Cap - Optional)
 Rails: 1½" Height x .100" Wall x 1½" Width .070" Wall
 Pickets: 1" x 1" x .065" Wall
 Picket Spacing: 4" between pickets
 Finial Options: Triad, Quad

2220 2 RAIL FLAT TOP

Heights: 54"
 Posts: 2½" x 2½" x .090" Wall w/ 71" centers
 Gate Posts: 2½" x .090" Wall Gate
 Post w/ Inserts = .215 Wall
 or 4" x 4" x .125" Wall
 Post Caps: 2½" or 4" Flat Cap - Standard
 (Ball Cap - Optional)
 Rails: 1½" Height x .100" Wall x 1½" Width .070" Wall
 Pickets: 1" x 1" x .065" Wall
 Picket Spacing: 4" between pickets

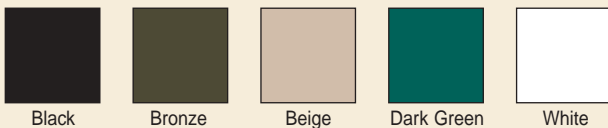
2230 3 RAIL FLAT TOP

Heights: 48", 54", 60", 72"
 Posts: 2½" x 2½" x .090" Wall w/ 71" centers
 Heights: 84", 96"
 Posts: 2½" x 2½" x .125" Wall w/ 71" centers
 Gate Posts: 2½" x .090" Gate Post
 w/ Inserts = .215 Wall
 or 4" x 4" x .125" Wall
 Post Caps: 2½" or 4" Flat Cap - Standard
 (Ball Cap - Optional)
 Rails: 1½" Height x .100" Wall x 1½" Width .070" Wall
 Pickets: 1" x 1" x .065" Wall
 Picket Spacing: 4" between pickets

2233 3 RAIL FLAT TOP W/ALT. SPEAR

Heights: 48", 54", 60", 72"
 Posts: 2½" x 2½" x .090" Wall w/ 71" centers
 Heights: 84", 96"
 Posts: 2½" x 2½" x .125" Wall w/ 71" centers
 Gate Posts: 2½" x .090" Wall Gate Post
 w/ Inserts = .215 Wall
 or 4" x 4" x .125" Wall
 Post Caps: 2½" or 4" Flat Cap - Standard
 (Ball Cap - Optional)
 Rails: 1½" Height x .100" Wall x 1½" Width .070" Wall
 Pickets: 1" x 1" x .065" Wall
 Picket Spacing: 4" between pickets
 Finial Options: Triad, Quad

STANDARD COLORS



Manufacturing Plants:

Bremen, IN Randleman, NC
 Sarcoxie, MO Valdosta, GA



Quality Products By:



D I S T R I B U T E D B Y :

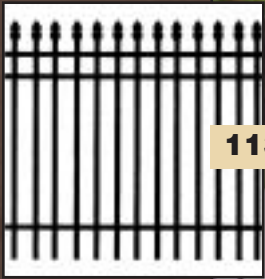


www.DiggerSpecialties.com

HP2/03 99547

Outstanding Features

- No Screws
Hidden Picket Fasteners (patent pending)
Hidden Rail Locks (patent pending)
- Standard Rackable Sections 12" in 6'
- $\frac{3}{4}$ " Pickets



1131



1131 3 RAIL W/ SPEAR POINTS

Heights: 36", 42", 48", 60", 72"

Posts: 2½" x 2½" x .065" Wall w/ 6' centers

Gate Posts: 2 1/2" Gate Post w/ Inserts = .190" Wall

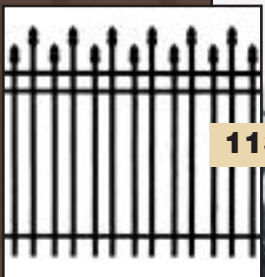
Post Caps: 2½" Flat Cap - Standard
(2½" Ball Cap - Optional)

Rails: 1" Height x .085" Wall x 1½" Width x .065" Wall

Pickets: $\frac{3}{4}$ " x $\frac{3}{4}$ " x .053" Wall

Picket Spacing: 3.65" between pickets

Finial Options: Triad, Quad



1132



1132 3 RAIL W/ ALT. SPEAR POINTS

Heights: 36", 42", 48", 60", 72"

Posts: 2½" x 2½" x .065" Wall w/ 6' centers

Gate Posts: 2½" Gate Post w/ Inserts = .190" Wall

Post Caps: 2½" Flat Cap - Standard
(2½" Ball Cap - Optional)

Rails: 1" Height x .085" Wall x 1½" Width x .065" Wall

Pickets: $\frac{3}{4}$ " x $\frac{3}{4}$ " x .053" Wall

Picket Spacing: 3.65" between pickets

Finial Options: Triad, Quad



1220



1220 2 RAIL FLAT TOP

Heights: 54"

Posts: 2½" x 2½" x .065" Wall w/ 6' centers

Gate Posts: 2½" Gate Post w/ Inserts = .190" Wall

Post Caps: 2½" Flat Cap - Standard
(Ball Cap - Optional), Gate Option

Rails: 1" Height x .085" Wall x 1½" Width x .065" Wall

Pickets: $\frac{3}{4}$ " x $\frac{3}{4}$ " x .053" Wall

Picket Spacing: 3.65" between pickets



Black



Bronze



Beige



Dark Green



White

- 2 1/2" Posts
- Eliminate Freight Damage
Company Owned Trucks
Securely Packaged
- Assembled Sections for Quick Installation

- Gates – All Rails and Pickets are Welded
- Lifetime Warranty

1230 3 RAIL FLAT TOP

Heights: 36", 42", 48", 60", 72"

Posts: 2 1/2" x 2 1/2" x .065" w/ 6' centers

Gate Posts: 2 1/2" Gate Post w/ Inserts = .190" Wall

Post Caps: 2 1/2" Flat Cap - Standard
(2 1/2" Ball Cap - Optional)

Rails: 1" Height x .085" Wall x 1 1/8" Width x .065" Wall

Pickets: 3/4" x 3/4" x .053" Wall

Picket Spacing: 3.65" between pickets



1230



1233 3 RAIL FLAT TOP W/ALT. SPEAR

Heights: 36", 42", 48", 60", 72"

Posts: 2 1/2" x 2 1/2" x .065" Wall w/ 6' centers

Gate Posts: 2 1/2" Gate Post w/ Inserts = .190" Wall

Post Caps: 2 1/2" Flat Cap - Standard
(2 1/2" Ball Cap - Optional)

Rails: 1" Height x .085" Wall x 1 1/8" Width x .065" Wall

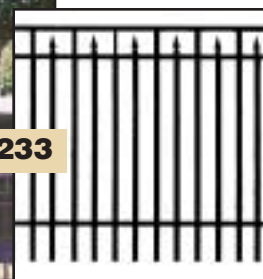
Pickets: 3/4" x 3/4" x .053" Wall

Picket Spacing: 3.65" between pickets

Finial Options: Triad, Quad

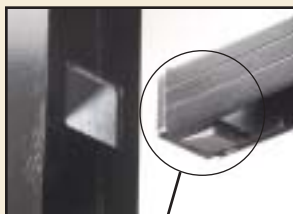


1233



Finials

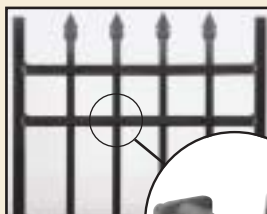
Spear
Quad
Triad



Hidden Rail Lock

(patent pending)

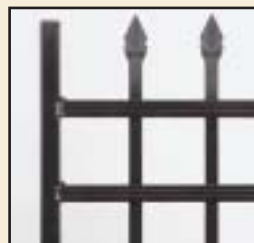
Eliminates scratches



Hidden Picket Fasteners

(patent pending)

No unsightly screws!



Welded Gate

All rails and pickets are welded.



Racking

12" racking in 6' section

COURTYARD™ gates with noncorrosive hardware